



RainBackup[®] in a Box

Plug-and-play
mains water backup
for rainwater harvesting
systems

Rain Backup
in a Box[®]
automatically
provides mains
water when
the rainwater
runs low

Simple to use
Simple to fit

Rainwater to appliances

Mains water arrival

Mains water to tank

Rain Water Tank

Float switch connected to
Rain Backup in a Box[®]

Rainwater flows
to storage tank

Pump



**DIRECT
FEED**

WRAS
APPROVED
PRODUCT



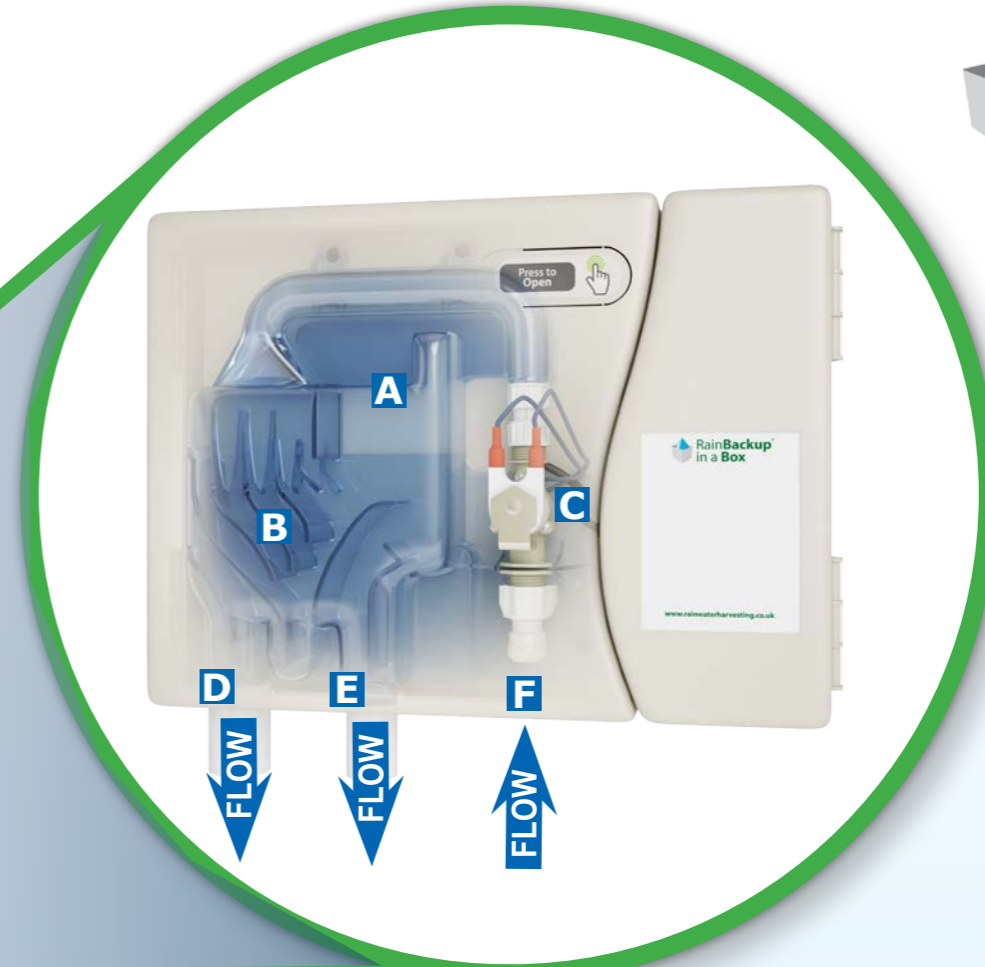
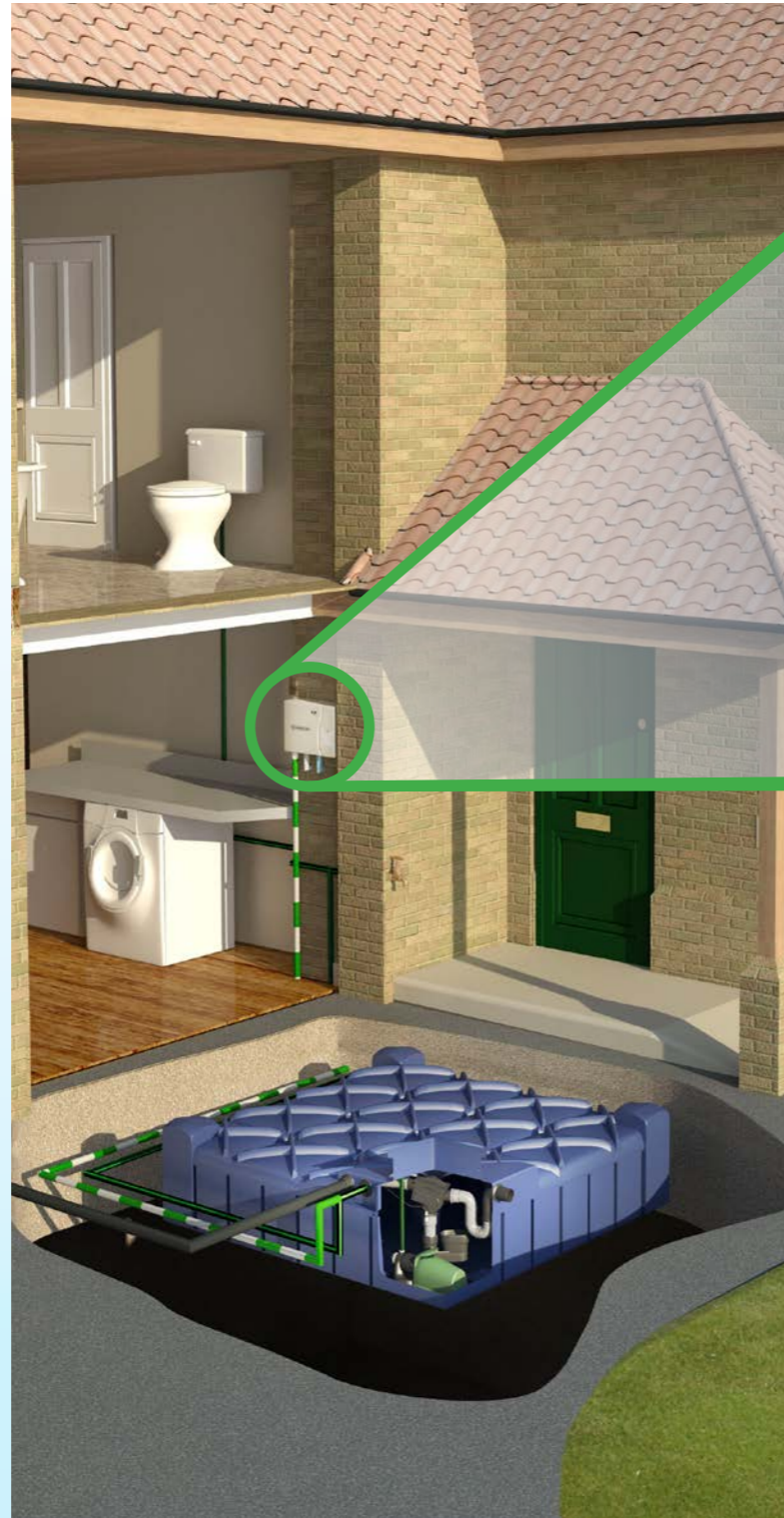
RainBackup[®] in a Box

MAINS WATER BACKUP FOR DIRECT FEED RAINWATER HARVESTING SYSTEMS



HOW DOES A DIRECT FEED RAINWATER HARVESTING SYSTEM WORK?

- Rain falls onto the roof, down the drain pipes, filtered and stored preferably in an underground tank. The water can be used for toilets, washing machines and outside use which can be a 50% saving on mains water.
- In a direct feed system there is a pressure sensitive pump in the underground tank.
- When a toilet is flushed, the pump will register a drop in pressure and start pumping. When the cistern is full, the pump will rebuild the pressure within the pipes and shut itself down. The pump will run every time there is a demand for water.
- The Rain Backup[®] in a Box will sense if the rainwater level becomes critically low. It will automatically allow a measured quantity of mains water into the tank, ensuring your appliances are never without water. The system does NOT fill the tank - Simply topping it up with around 200L of water, in the hope that it will rain before the system is needed again.
- Either a level sensor or float switch (depending on the model) is used to detect when water is at a critical level.
- When the sensor is activated, a solenoid valve will open in the control unit, (mounted within the home) allowing mains water to enter the tank.



- A** 1" Air Gap
- B** Calming Weir
- C** Inlet Valve
- D** Mains Water Outlet to Tank
- E** Overflow to Outside
- F** Mains Water Inlet Pipe

WRAS Approval is the best way to demonstrate compliance as it is granted directly by the representatives of the water suppliers and is therefore accepted by every water supplier in the UK.

WRAS
#1306031
APPROVED PRODUCT



FOR DEEP DIG TANKS - BUB01

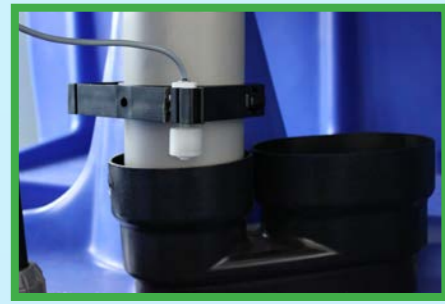
The system uses a traditional float switch. When water in the tank gets to a critical level, the float switch will drop, opening the solenoid valve within the control unit, allowing water to enter the tank. When the float switch rises, the solenoid will shut.

FOR SHALLOW DIG TANKS - BUB02

The system has been especially designed for the increasingly popular "shallow dig" tanks.

The system uses a contact-less level sensor within the tank, sending a message to the control unit if the water hits a critical level.

Unlike any other mains backup system, the Rain Backup[®] in a Box introduces a timed amount of water into the tank. This is factory set at 45 minutes. This allows a minimum amount of mains water to be used until the next rainfall.



SIMPLE MAINS BACKUP & EASY TO FIT

- Replaces multiple, customer assembled components with one easy to install unit.
- Simple “plug and play” install- favoured by builders.
- Adheres to all UK water regulations, includes AB air gap and overflow.
- Stylish control unit.
- Silent operation.
- Safe and efficient 12V supply.



380mm (W) x 270mm (H) x 95mm (D)

REASONS TO USE RAINWATER HARVESTING LTD

- UK's largest supplier of domestic rainwater harvesting systems.
- Full after sales and technical support.
- We design, develop and manufacture our systems such as the Rain Director® and Rain Backup® In a Box, in house, in the UK.
- All products ex stock from our 65,000 sqft warehouse.
- We can normally deliver within 5 days.

Other eco-innovations from RainWaterHarvesting Ltd.

For gravity feed rainwater systems, use the energy-conscious Rain Director® RWH-RD01 with smart header tank and control panel.



The British-built HydroForce™ pump RWH-HYD02 is optimised for rainwater harvesting: submersible, pressure sensitive, electronically-controlled, with built-in non-return valve and double dry-run protection.



Our Control Units Can Be Incorporated into any Rainwater Harvesting System

The Rain Backup® in a Box is registered and protected.



 RainBackup®
in a Box



Online and phone sales at:
www.rainwaterharvesting.co.uk

For trade and bulk discounts, distribution terms or for more information please call **0800 074 7234** or visit:
www.rainwater-harvesting.co.uk

RainWater Harvesting Ltd.
Unit A, Harrier Park, Southgate Way,
Orton Southgate, Peterborough PE2 6YQ

Email: info@RainWaterHarvesting.co.uk
Phone **01733 405111** - Fax 01733 230996

