



UK Distributors



Manufacturer and Distributor of Rainwater Harvesting Products

Who We Are...

At Rainwater Harvesting Ltd, we are proud to be one of the UK's leading manufacturer and supplier of Rainwater Harvesting equipment. Operating from our 60,000 sq ft premises in Peterborough, central England, our name has become synonymous with high quality, technologically advanced, British made product.



Our products have always differentiated themselves within the industry, with intelligent design and high quality manufacture. Making them popular to both the trade, and the end user.

We manufacture our simple mains top-up device, the Backup in a box and our innovative low energy header tank system the Rain Director. Our sister company Hydroforce Pumps Ltd manufactures the Hydroforce Series 3 Submersible Pump.

On a domestic level we supply full systems to end users and the trade. We have a full time technical and after sales support team that gives us an edge when trying to explain the product as we make it.

Because we engineer an original concept, develop it through CAD, tooling, build and take the end product to market no-one understands our products better than we do in the UK. All products that we manufacture can be "own branded" dependent on volumes.

We have been very successful in the end user market in the UK so we do understand the demands that are placed on our trade partners. We have installed a back room team that will support all activities of our UK Partners.



Rainwater Harvesting Ltd. Unit A Harrier Park
Southgate Way, Orton Southgate
Peterborough PE2 6YQ – 01733 405111



The Rain Director®

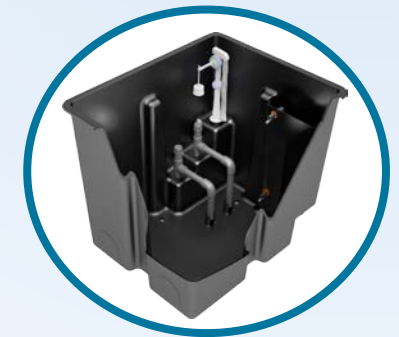
The Rain Director® is the unique rainwater management system for the control of rainwater round the home and garden.

The Rain Director® rainwater management system includes a header tank, a pump and a programmable control valve unit that directs the flow of rainwater to washing machines, toilets, the garden and other uses.

A header tank in the roofspace is controlled by electronic level sensors. These sensors drive the valves through the programmable control panel. The pump in the underground tank fills the header tank when the valves in the control unit are opened. The result is a constant head or pressure of water to the toilet, washing machine or tap.



WRAS no. 0912064



Shipping Details

Product Code	Description	W	D	H	Weight	Qty /Pallet
RWH-RD01	Control Unit	450	400	120	2.6kg	84
RWH-HDT91	Header Tank	685	590	580	8.3kg	6
RWH-HYD03	Pump	230	770	330	12kg	25
Complete System inc all 3 components						6

The Rain Backup in a Box®

The Rain Backup in a Box® is fitted inside the building where the occupiers can see and hear it. When rainwater has run out in the underground tank, a float switch that is in the underground tank will drop and open the solenoid valve. Mains water will flow to the tank and put a small amount of water into the tank to ensure that the pump keeps running.

There are two models of The Rain Backup in a Box®.

BUB01 has a traditional float switch that lifts and drops dependent on the water level. These are best used in deep tanks.

BUB02 has a switch that triggers when the water levels drops but when the switch lifts due to the water level, the water flow will continue for 45 minutes. This model is best used in a shallow dig tank.



Shipping Details

Product Code		W	D	H	Weight	Qty /Pallet
RWH-BUB01	Backup in a Box	380	310	210	4.7kg	42
RWH-BUB02	Backup in a Box	380	310	210	3.3kg	42

HydroForce™ Series 3 Pump

The HydroForce™ Pressure Sensitive Submersible Rainwater Harvesting Pump has been engineered by HydroForce Pumps Ltd in Peterborough to respond to the demand for the highest quality pump for use under water in rainwater harvesting tanks.

Using the most rugged components it has been exhaustively tested for trouble-free running. The pump features a self-controlling pressure switch, dry run protection and a non-return valve. It is suitable for total immersion in tank water or it can be externally connected to the tank above ground.



Some of the specifications....

- Inbuilt pressure switch (automatically turns on or off)
- Max Head (nominal) 35 metres, pump pressure at outlet 3.5bar
- Dry-run protection
- Electricity consumption 800w with 10m H07RN-F cable
- 2 year guarantee
- Inline filter optional

Shipping details

Product Code		W	D	H	Weight	Qty /Pallet
RWH-HYD03	Pump with filter	230	770	330	12kg	25
RWH-HYD03FL	Pump no filter	230	600	280	13kg	30

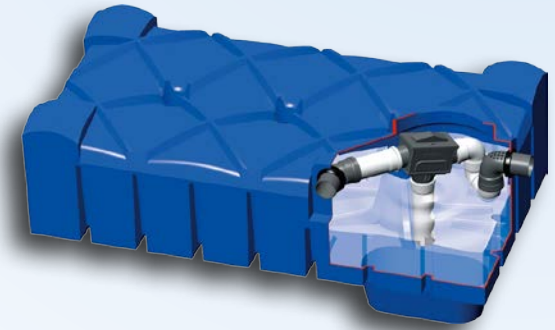
F-Line Shallow Dig Tank

F-Line Flat Tank - underground garden rainwater harvesting system tank. The unique F-Line flat shallow dig tank, supplied ready for use as a garden rainwater harvesting tank. Collect and store cooled rainwater for your valuable garden plants or build a kit for household use.

Available in 1500, 3000, 5000 & 7500 Litres.

The F-Line shallow dig tanks have become hugely popular due to their easy and cost effective shallow dig design. Unlike traditional, spherically shaped tanks, the F-line range from just 1015-1,415mm deep. This means the excavation is quick, safe and efficient even by hand! Everything about the F-Line tank range lends itself to an easy, trouble free installation. This is why they have turned into our best selling tank range.

- Minimum installation depth
- Less earth to remove
- Tank delivered in one piece with pre fitted filter, overflow and calmed inlet
- No need to concrete in
- Suitable for high water table locations
- Available in 4 sizes : 1500L, 3000L, 5000L, 7500L
- Can be linked together for larger capacity
- Extendable sleeve available
- Vehicle loading lid available



Shipping details

Size	Length	Width	Height (tank body)	Height (inc shaft)	Weight	No. per container
1500L	2400mm	1200mm	650mm	1015mm	80kg	24
3000L	2400mm	2400mm	650mm	1015mm	170kg	13
5000L	2960mm	2220mm	955mm	1350mm	250kg	8
7500L	3340mm	2310mm	1125mm	1415mm	310kg	8

Tanks Kits

The kits that we supply contain everything that is required to turn your tank into a complete rainwater harvesting system. We offer three kits, one for a garden system, one for a direct feed system and one for an in-direct feed system.

Each kit contains:

- HydroForce Pump
- Compact Filter
- Overflow Siphon
- Calmed Inlet
- Slip Couplers



Additional products:

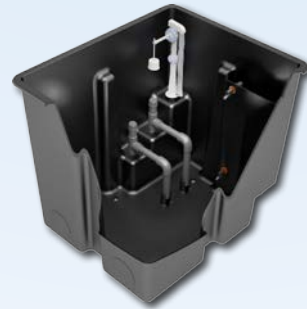
Direct Feed Systems

- Rain Backup in a Box



In-direct Feed Systems

- Rain Director Control Panel
- Rain Director Smart Header Tank



Shipping Details

Product Code	Kit	W	D	H	Weight	Qty/Pallet
CARTON-GK1	Garden Kit 1	500	430	29	32.9kg	8
CARTON-GK2	Garden Kit 2	770	220	330	32.9kg	8
CARTON-DK1	Direct Kit 1	710	220	330	40.4kg	6
CARTON-DK2	Direct Kit 2	500	350	690	40.4kg	6
CARTON-IDK1	In-direct Kit 1	500	430	29	42.2kg	3
CARTON-IDK2	In-direct Kit 2	770	220	330	42.2kg	3



Telephone: 01733 405111
Trade Website: www.rainwater-harvesting.co.uk
Shop Website: www.rainwaterharvesting.co.uk

Rainwater Harvesting Ltd.
Unit A Harrier Park
Southgate Way
Orton Southgate
Peterborough
PE2 6YQ